

## LOCATION

### Best Western - Sodehotel

Avenue E. Mounierlaan 5 - B-1200 Brussels  
tel. : 32-2-775 21 11 — fax : 32-2-770 47 80

### CONGRESS SECRETARIAT

Secrétariat de Chirurgie Cardiovasculaire et Thoracique



Cliniques universitaires Saint-Luc

Avenue Hippocrate 10  
1200 Brussels

tel : 32-2-764 61 07/ 61 13

Fax : 32-2-764 89 60

e-mail : ccv@chir.ucl.ac.be

### ORGANIZATION

#### TRAVEX CONGRESS

tel : 32-2-533 20 45

Fax : 32-2-537 75 88

e-mail : b.vandermeuse@travex-travel.be

### WEBSITE

[www.valvesymposium.org](http://www.valvesymposium.org)

#### MAJOR SPONSORS

EDWARDS LIFESCIENCES  
MEDTRONIC BELGIUM  
ST-JUDE MEDICAL BELGIUM

## SCIENTIFIC COMMITTEE

### SURGERY

G. EL KHOURY, MD  
P. ASTARCI, MD  
N. BETHUYNE, MD  
L. de KERCHOVE, MD  
Y. d'UDEKEM, MD  
P.Y. ETIENNE, MD

J.C. FUNKEN, MD  
D. GLINEUR, MD  
V. LACROIX, MD  
Ph. NOIRHOMME, MD  
A. PONCELET, MD  
J. RUBAY, MD  
R. VERHELST, MD

### CARDIOLOGY

J.L. VANOVERSCHELDE, MD  
CH. BEAULOYE, MD  
CH. BROHET, MD  
N. DEBBAS, MD  
D. DE JONGHE, MD  
B. GERBER, MD  
O. GURNÉ, MD  
CL. HANET, MD

J. KEFER, MD  
J. MELIN, MD  
A. PASQUET, MD  
D. RAPHAEL  
J. RENKIN, MD  
CH. SCAVEE, MD  
D. VANCRAEYNST, MD

### INTENSIVE CARE

L. JACQUET, MD  
O. VAN CAENEGEM, MD

F. LAARBAUI, MD  
R. LOVAT, MD

### ANESTHESIA

Ph. BAELE, MD  
A. MATTA, MD  
M.-Th. RENNOTTE, MD

M. VAN DYCK, MD  
Ch. WATREMEZ, MD  
M. MOMENI, MD



8<sup>th</sup> SYMPOSIUM on

## AORTIC AND MITRAL RECONSTRUCTIVE SURGERY

Focus on Spring Surgical Techniques



**JUNE 20 - 21, 2008**

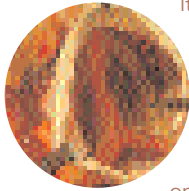
Live surgery transmission / Video presentation  
Case discussions

Best Western - Sodehotel  
Brussels, Belgium  
[www.valvesymposium.org](http://www.valvesymposium.org)



## 8<sup>th</sup> SYMPOSIUM on AORTIC AND MITRAL RECONSTRUCTIVE SURGERY

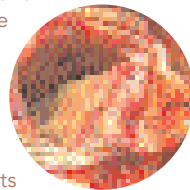
Dear Friends and Colleagues



It gives us again great pleasure to invite you to attend the 8th Symposium on Aortic and Mitral Reconstructive Surgery, to be held in Brussels, Belgium, June 20-21, 2008.

As in previous years, the course will focus on the diagnosis and surgical aspects of aortic valve diseases, with particular emphasis on the technical aspects of valve repair and on echocardiographic assessment. Attendees of previous meetings know what to expect: an attractive and diversified scientific program which offers a full spectrum of learning opportunities, from continuing medical education to presentations on the most recent surgical advances in valve repair. The program will also offer several live surgery demonstrations that will illustrate the various surgical procedures.

Valve repair surgery necessitates a permanent discussion between cardiac surgeons, cardiologists, and anesthesiologists. This is illustrated by the particular and great attention to the pre-pre and post procedures echocardiographic aspects and their contributions to the valve management.



This year we will focus on the technical aspects of valve sparing surgery and its influence on leaflet coaptation and prolapse.

We have developed a systematic and step-by-step sparing technique. Our challenge colleague is to achieve a competent and durable repaired or preserved valve. Our goal is to allow the cardiac surgeon to achieve our excellent rate of immediate and long term success.

The venue will be in Brussels, a capital of the Europe Union and a city steeped in European history. There is much to enjoy in this city and its environments.



We are looking forward to two exciting days of learning, exploration of new directions, scientific stimulation and meeting international colleagues.

Prof G. El Khoury on behalf of,  
The Scientific Committee



June 20 - 21, 2008

# PROGRAM

## Focus on Sparing Surgical Techniques

### FRIDAY, JUNE 20

- 08.00** Welcome & registration
- 09.00** Opening : G. El Khoury
- 09.10-13.00** **Functional concepts of aortic valve regurgitation and repair**  
- From anatomy to surgery  
- From anatomy to echocardiography  
- Timing of surgery in aortic regurgitation
- 11.00** Coffee break
- 3 LIVE DEMONSTRATIONS**
- 13.00 - 14.00** Lunch
- 14.00-17.30** **Focus on sparing surgical techniques - Reimplantation**  
- Root preparation  
- Proximal plan management  
- Handling of the prosthesis  
- Distal plan  
- Leaflet coaptation assessment
- 15.45** Coffee break
- 1 LIVE DEMONSTRATION**
- 17.30** Closing remarks
- 20.00** Gala Diner (Free shuttle bus)

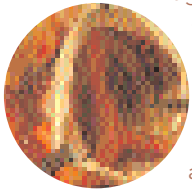
### SATURDAY, JUNE 21

- 08.00** Welcome
- 08.30** Opening
- 09.00-10.00** **Focus on the assessment of the aortic valve regurgitation by echo and MRI pre – per – post**  
- Quantification  
- Mechanism
- 10.00** Coffee break
- 10.30 - 13.00** **Focus on how to do it**  
- Sparing and cusp prolaps  
- Sparing and bicuspid valve  
- Sparing and acute dissection
- 3 LIVE DEMONSTRATIONS**
- 13.00 - 14.00** Lunch
- 14.00-17.30** **Mid and long term results :**  
- isolated tricuspid valve repair  
- aortic valve sparing  
- bicuspid aortic valve repair
- 15.45** Coffee break
- 1 LIVE DEMONSTRATION**
- 17.30** Congress Closure



## 8<sup>th</sup> SYMPOSIUM on AORTIC AND MITRAL RECONSTRUCTIVE SURGERY

Dear Friends and Colleagues



It gives us again great pleasure to invite you to attend the 8th Symposium on Aortic and Mitral Reconstructive Surgery, to be held in Brussels, Belgium, June 20-21, 2008.

As in previous years, the course will focus on the diagnosis and surgical aspects of aortic valve diseases, with particular emphasis on the technical aspects of valve repair and on echocardiographic assessment. Attendees of previous meetings know what to expect: an attractive and diversified scientific program which offers a full spectrum of learning opportunities, from continuing medical education to presentations on the most recent surgical advances in valve repair. The program will also offer several live surgery demonstrations that will illustrate the various surgical procedures.

Valve repair surgery necessitates a permanent discussion between cardiac surgeons, cardiologists, and anesthesiologists. This is illustrated by the particular and great attention to the pre-per and post procedures echocardiographic aspects and their contributions to the valve management.



This year we will focus and pay attention to the problem of leaflet prolapse pathology and management. Leaflet prolapse may be present, in bicuspid and tricuspid aortic valve regurgitation, isolated or associated to aortic root aneurysm. It might be corrected or worsened by valve sparing procedure. Detect, assess, preserve and repair the prolapse is the key success in the management of the valve regurgitation



The venue will be in Brussels, a capital of the Europe Union and a city steeped in European history. There is much to enjoy in this city and its environments.

We are looking forward to two exciting days of learning, exploration of new directions, scientific stimulation and meeting international colleagues.

Prof G. El Khoury on behalf of,  
The Scientific Committee



June 20 - 21, 2008

## P R O G R A M

# Management of Aortic and Mitral Valve Regurgitation

## ■ Diagnosis and evaluations

Latest imaging developments :

- . TEE
- . 3D echo
- . MRI
- . CT scan

8 LIVE  
SURGICAL  
DEMONSTRATIONS



## ■ Medical management



## ■ Surgical management :

- leaflet repair
- valve sparing procedures
- mid-term results

